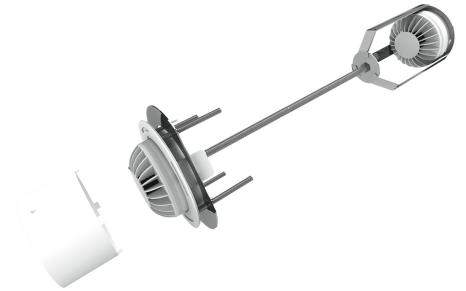




TWINSET – SOLUTION FOR FIRE DETECTION IN FALSE CEILING

Features

- Built in steel.
- Easy to install
- Easy to remove
- Predisposed for terminal board mounting (not included)
- Adaptable to different countertop sizes
- Housing for two sensors with base (not included)
- Arrangement for optical alarm repeater (not included)
- Available in different colors
- Sophisticated design



Application

TwinSet simplifies the installation of the two detectors through a single wiring. The length of the rod is adjustable according to any need.

TwinSet simplifies the procedures of inspection also in the most difficult situations, adapting to any context. No more panels to disassemble and trapdoors to open.

The twin set kit allows you to inspect without difficulty both the sensor in the room and in the false ceiling by rotating the countertop adapter (ARC13512) clockwise or counterclockwise. The length of the support bar can be adapted up to 2 meters in length.

Twinset is particularly suitable for:

- Non-inspectable false ceilings
- Environments in which a sought-after exterior appearance is required
- Environments where a minimum and discreet visual impact is required



TWINSET – SOLUTION FOR FIRE DETECTION IN FALSE CEILING

Technical specifications	
Diameter Adapter for false ceiling	135 mm
Diameter Extractable support for countertop detector	111 mm
Weight: False ceiling adapter	172 gr
Weight: Extractable support for false ceiling detector	476 gr
Weight: Support rod length 1mt	Variable based on length
Construction material	Stainless steel
Construction material: Support rod length	Galvanized steel
Color: False ceiling adapter	Standard white, modifiable on request
Color: Extractable support for false ceiling detector	Stainless steel
Color: Support rod length	Stainless steel
Operating temperature	As a sensor used

Product Name	Description
ARC13512	Ceiling adapter
SERC13512	Extractable support for false ceiling detector
AF13512	Support rod length 1mt
AF13512-05	Support rod length 0,5mt